



Farmington Canal Heritage Trail Gap Closure and CT *fastrak* Study

CRCOG, Plainville, Southington and New Britain

Workshop Reporting Meeting
October 6, 2016



CONCORDIS GROEP



Purpose of Meeting

- Welcome and Introductions
- Review What We Heard
- Next steps
- Your Feedback





Plainville





New Britain





Shared Community Values



Convenience
Freedom
Weather
Seasons
Nature
Trees
Opportunity
Work
Employment
Rural
Urban
Small Town
Walkability
Active Lifestyle
Colleges
Museum
Health
People
History
Diversity
Culture
Community
Family
Friends
Good neighbors
Home
Access
Location
Green Space
Open Space
Recreation
Clean Air
Back Roads
Bike Trails
Schools
Safety
Connectivity
Environment
Character

Our Values



WHY?



Active Transportation



Jobs



Age Friendly



Nature with Urban



WHY?



Universal Design



Safe Routes to School



Millenials/Lifestyle



Connectivity



Family



Vibrant Town Centers



Non-Nuclear Families

WHY?



WHY?



WHY?



Transportation Equity



Placemaking



Safety



Social Exchange

WHY?



Long-Distance Bicyclists



Linkages Parks-to-Parks



Local Residents



Focus Group Meetings







New Britain

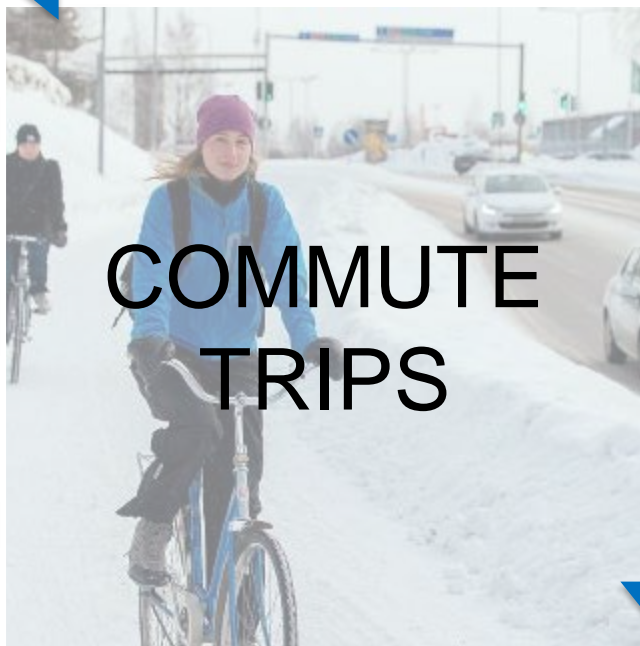




**SHOPPING
TRIPS**



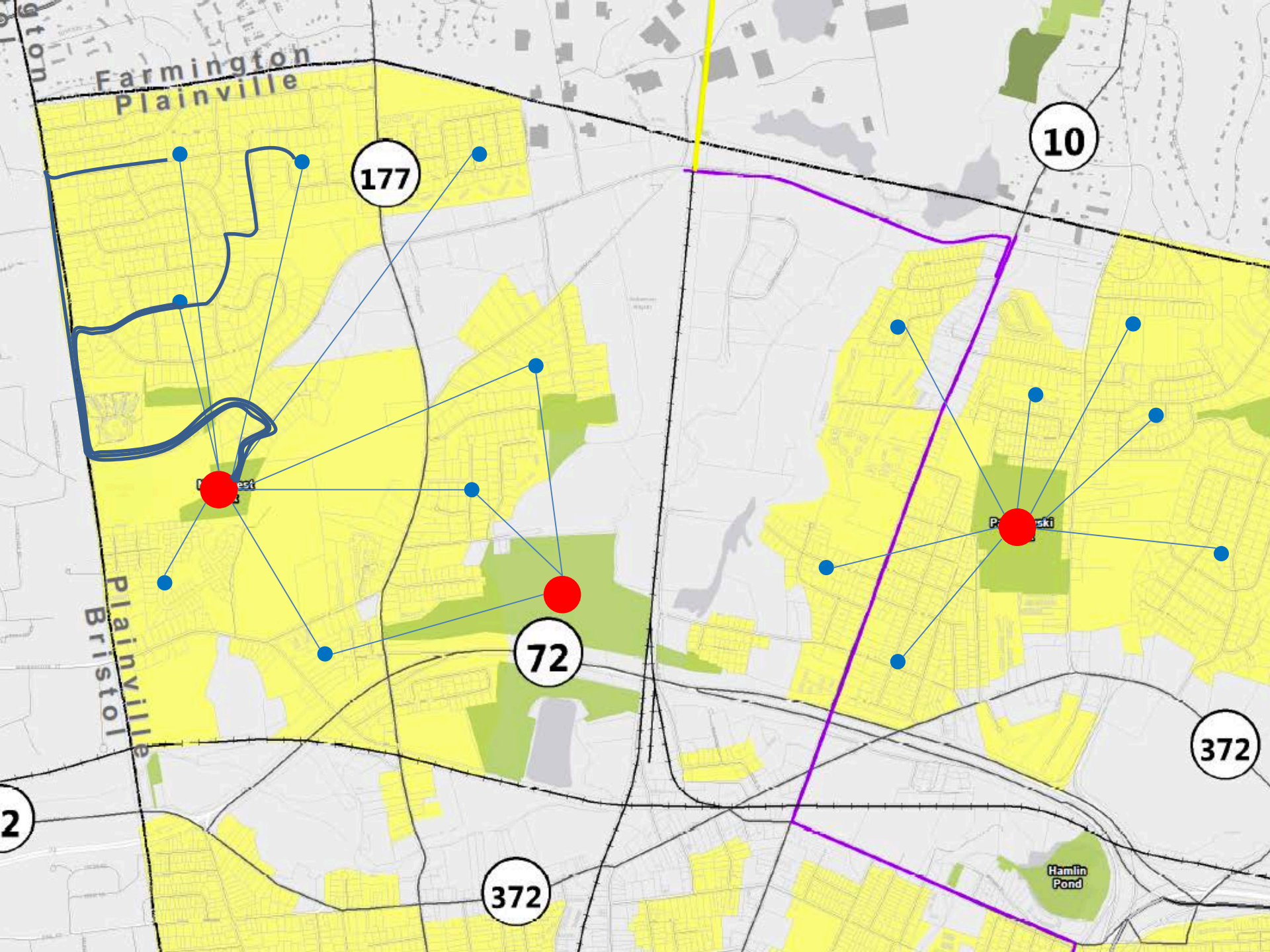
**SCHOOL
TRIPS**



**COMMUTE
TRIPS**

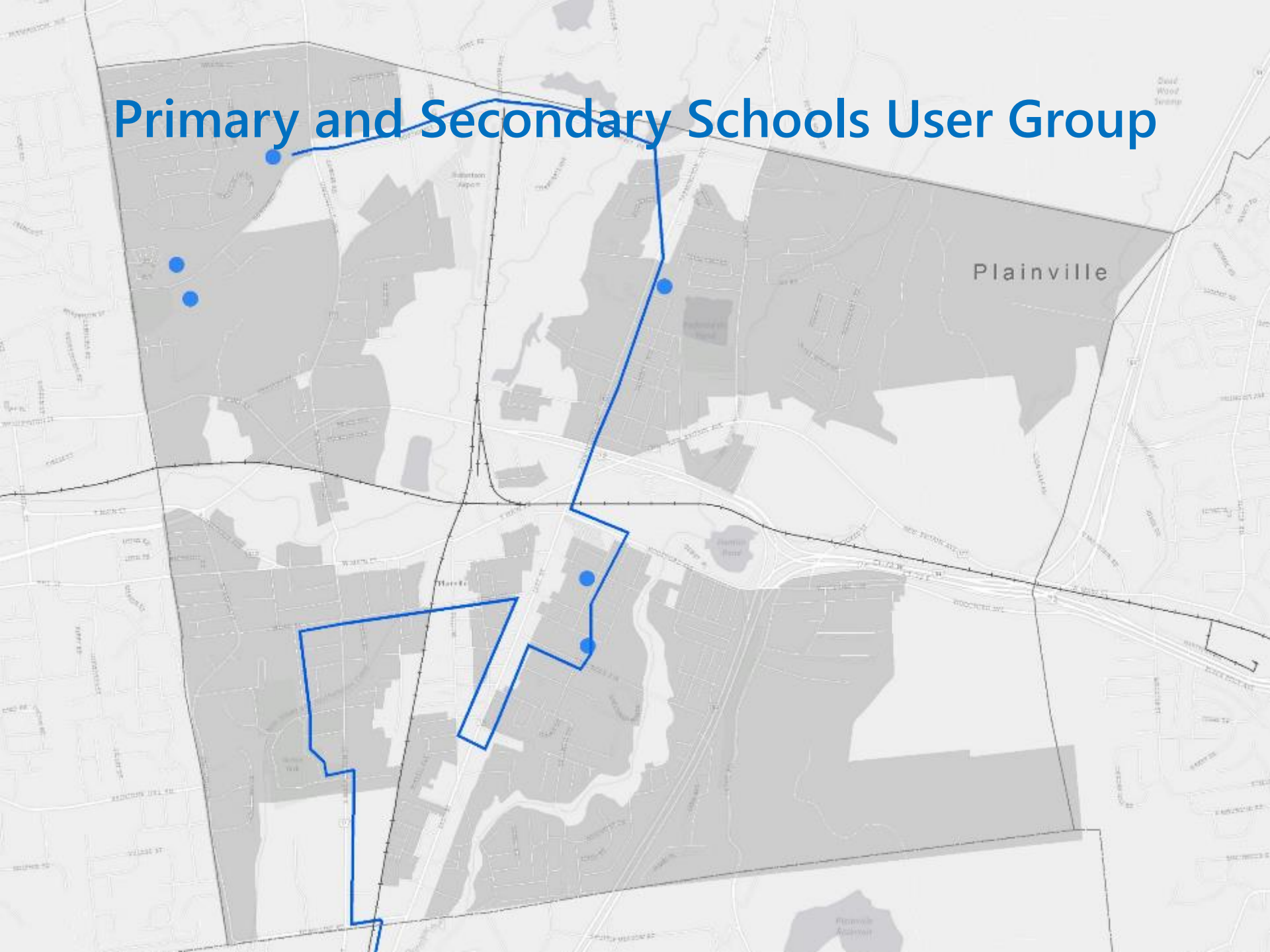


**RECREATION
TRIPS**

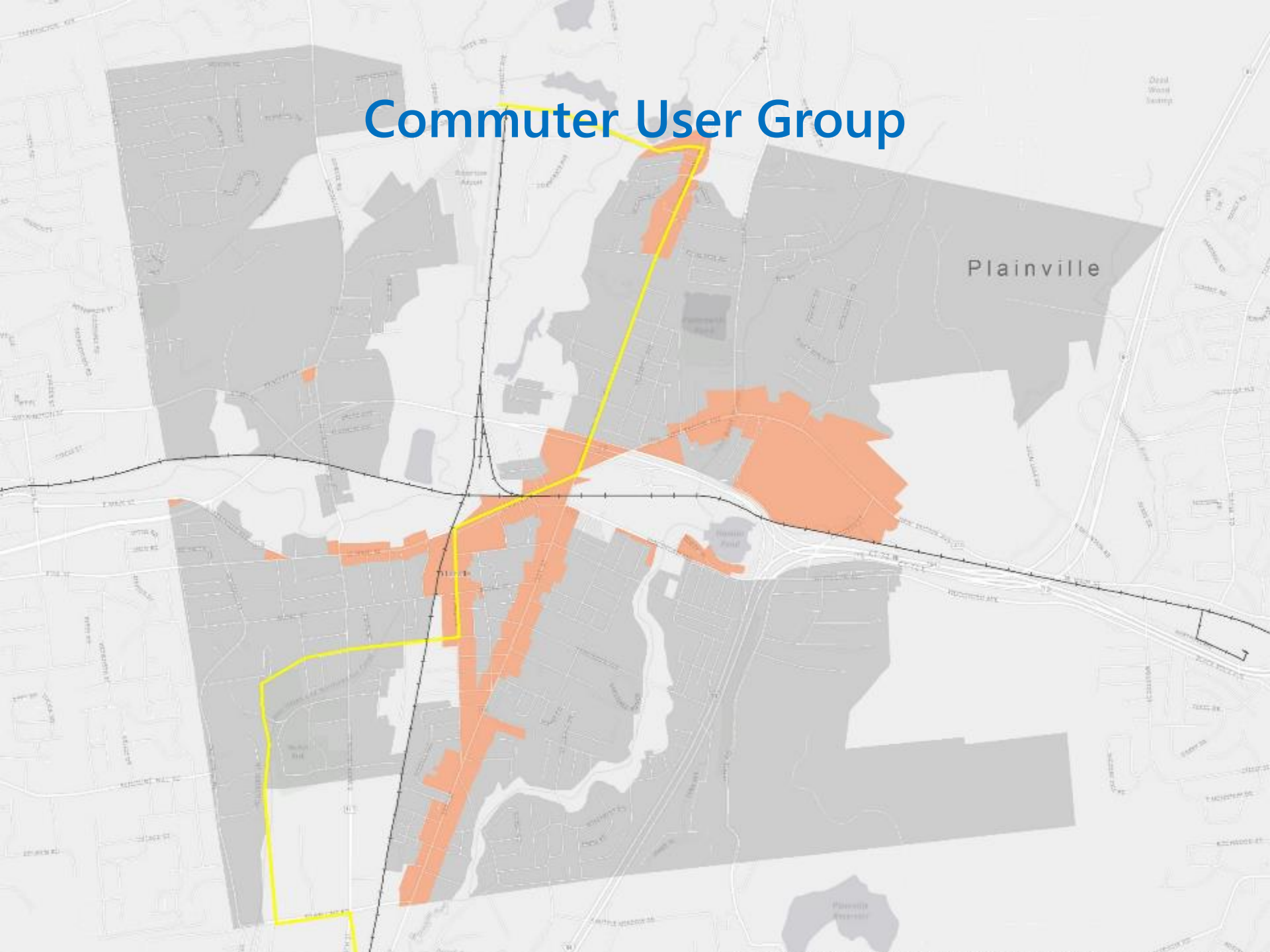


PLAINVILLE

Primary and Secondary Schools User Group



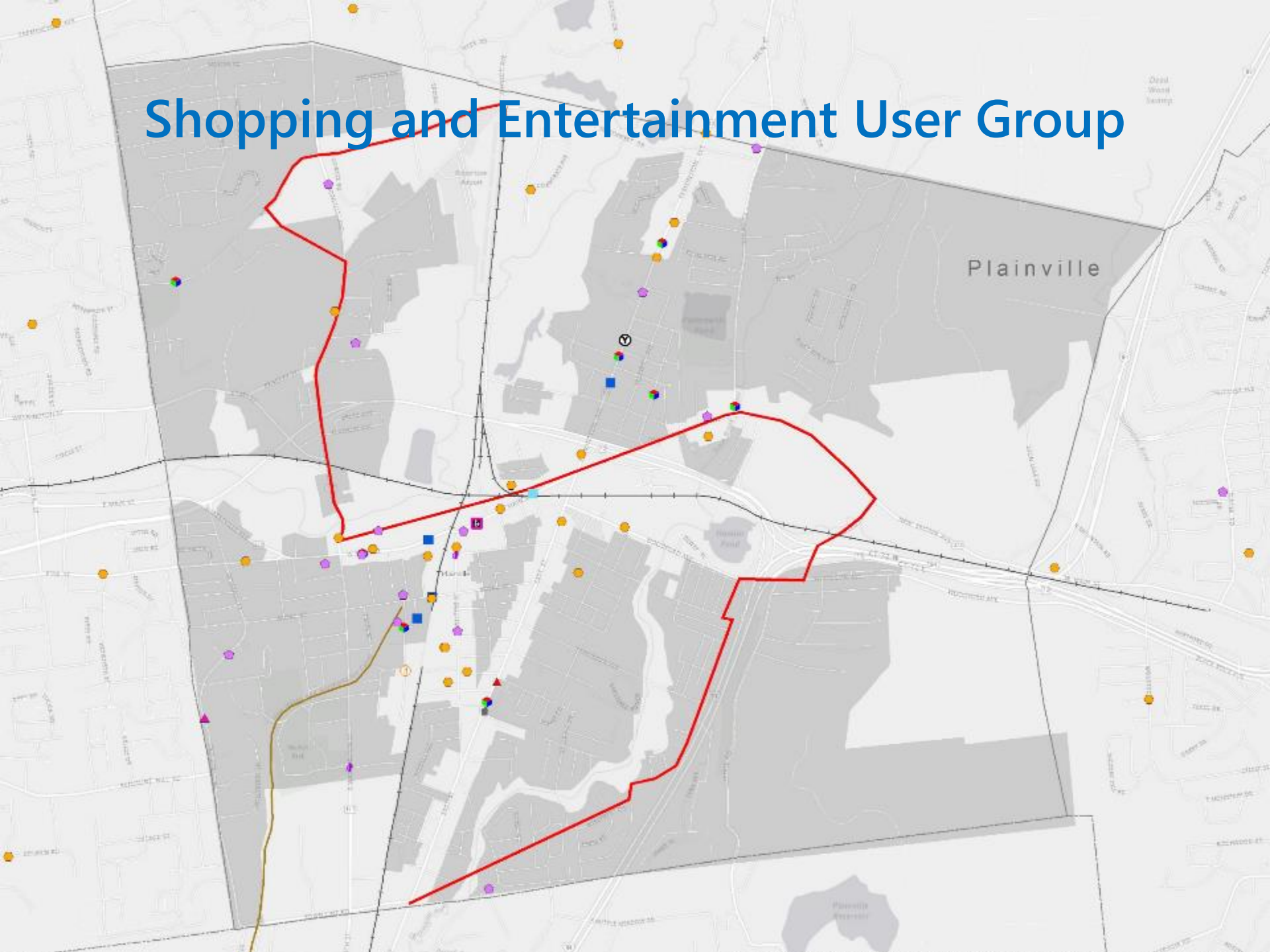
Commuter User Group



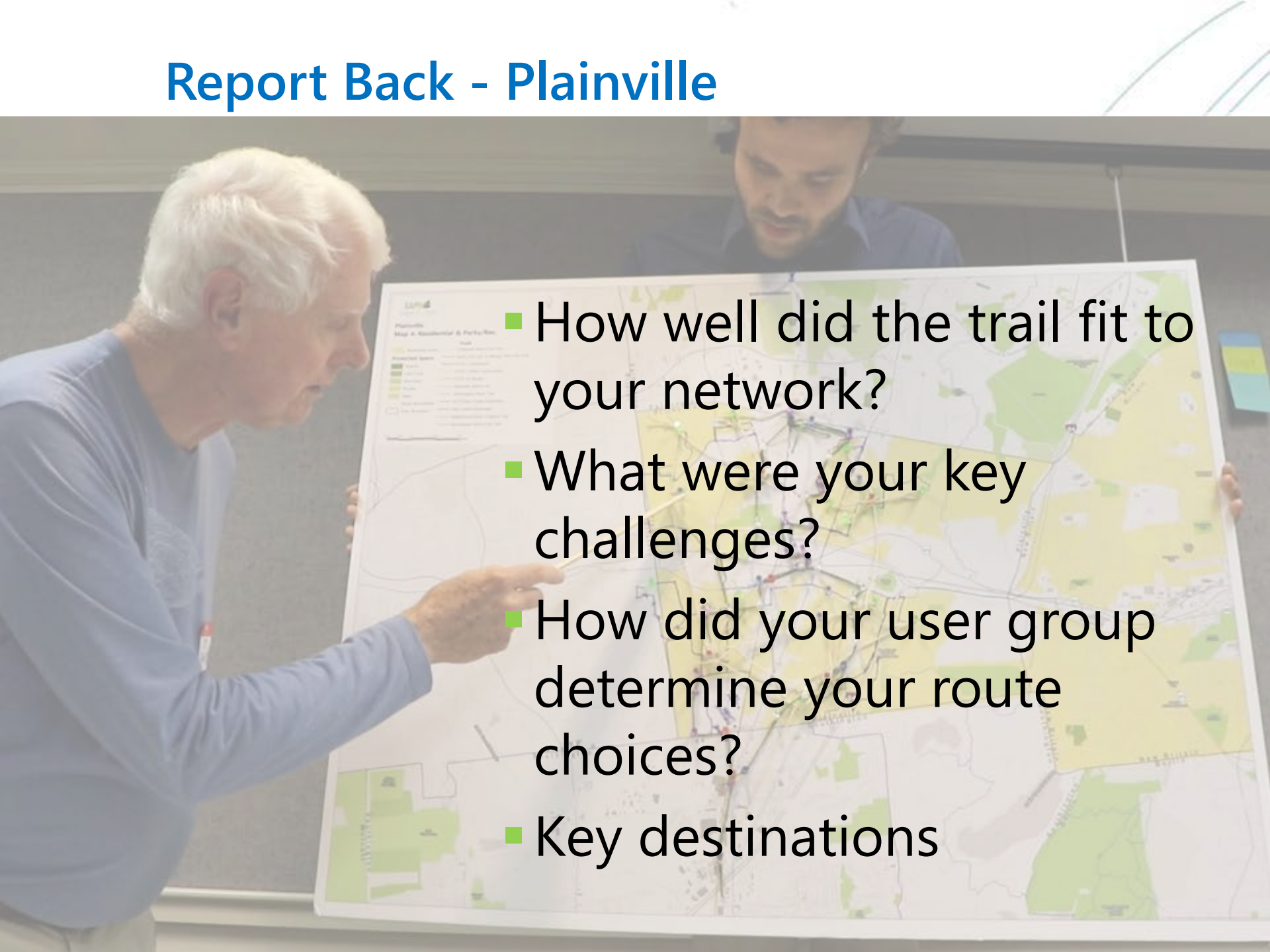
Parks and Recreation User Group



Shopping and Entertainment User Group

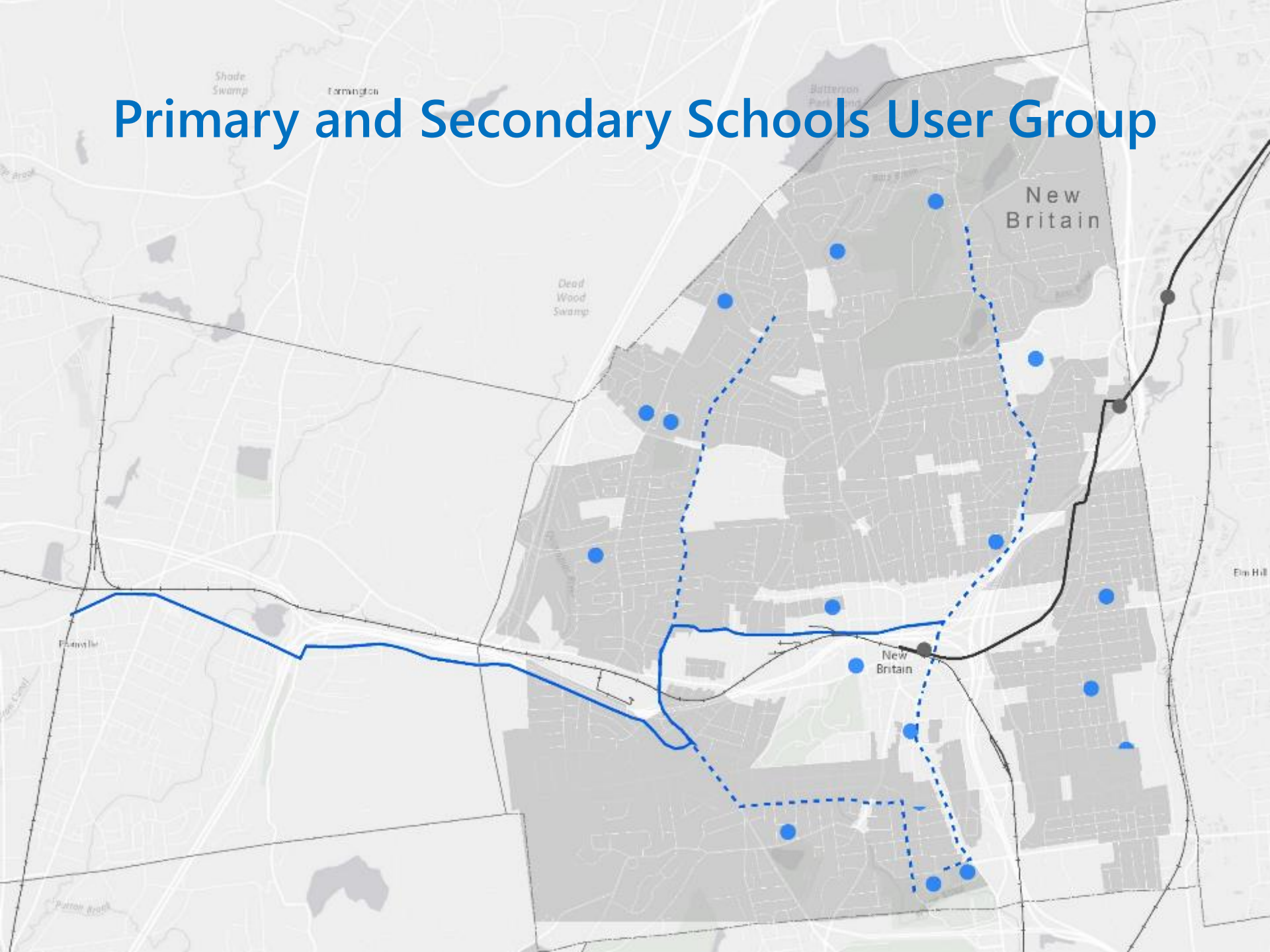


Report Back - Plainville

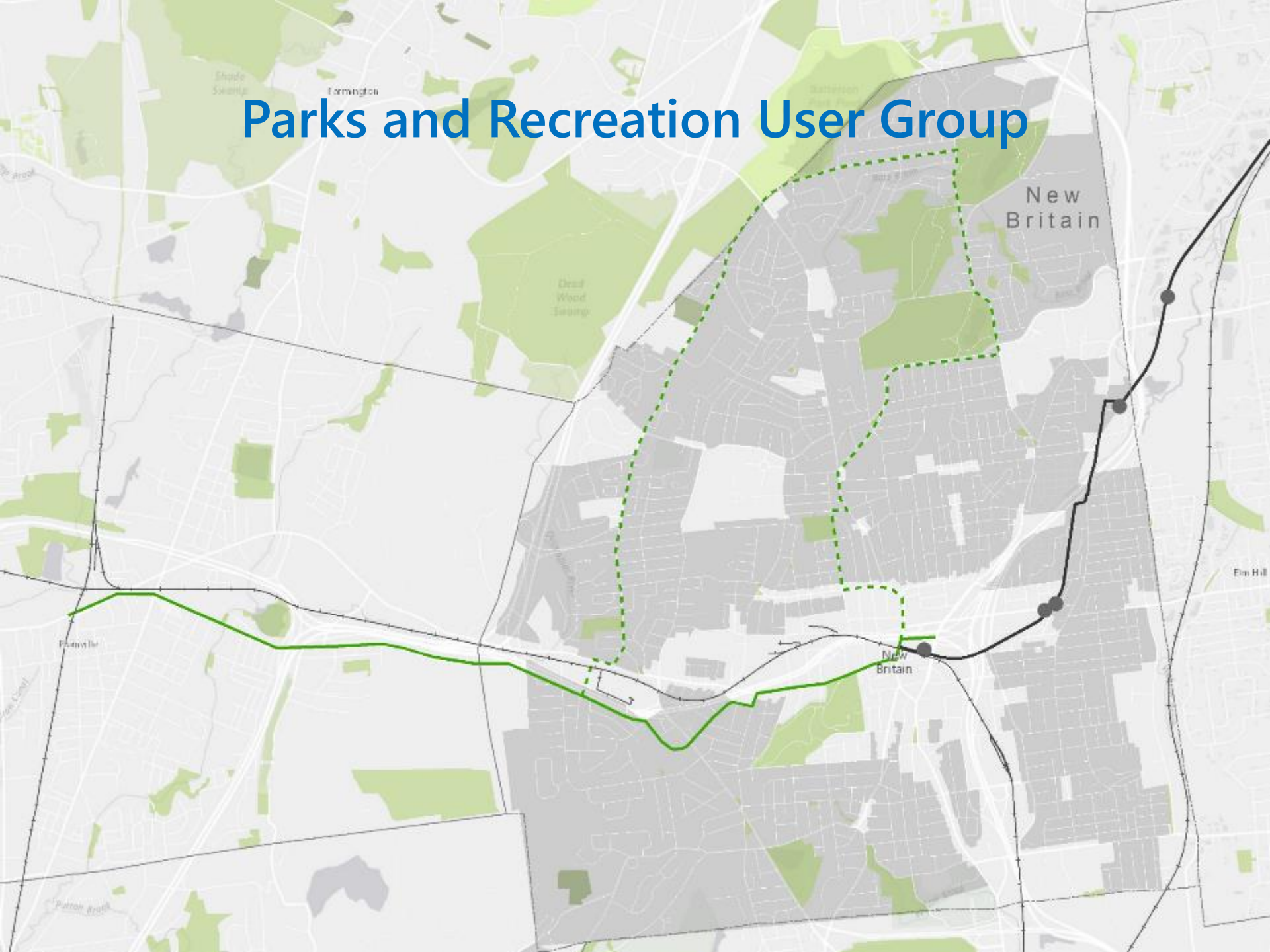
- 
- How well did the trail fit to your network?
 - What were your key challenges?
 - How did your user group determine your route choices?
 - Key destinations

New Britain

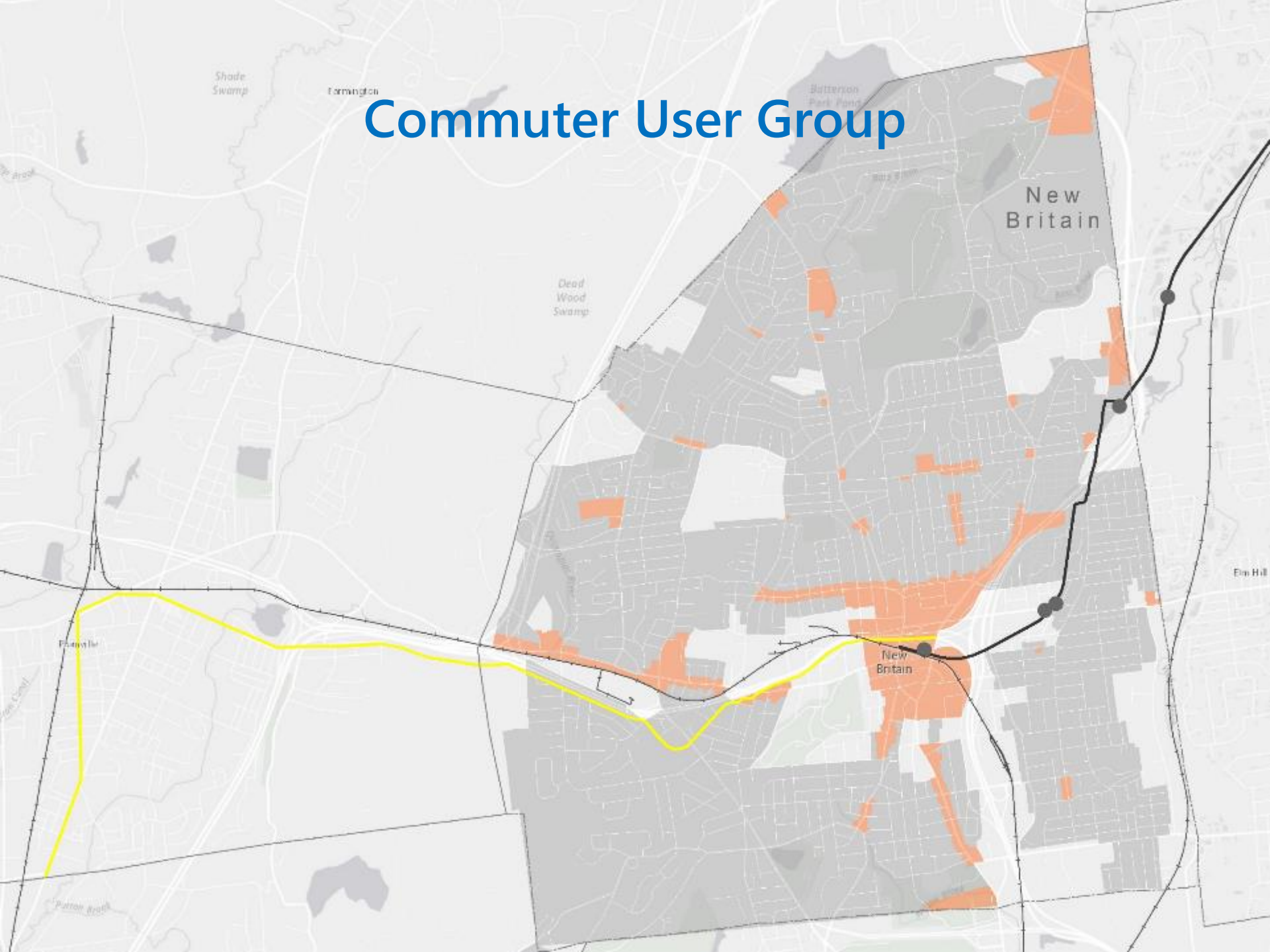
Primary and Secondary Schools User Group



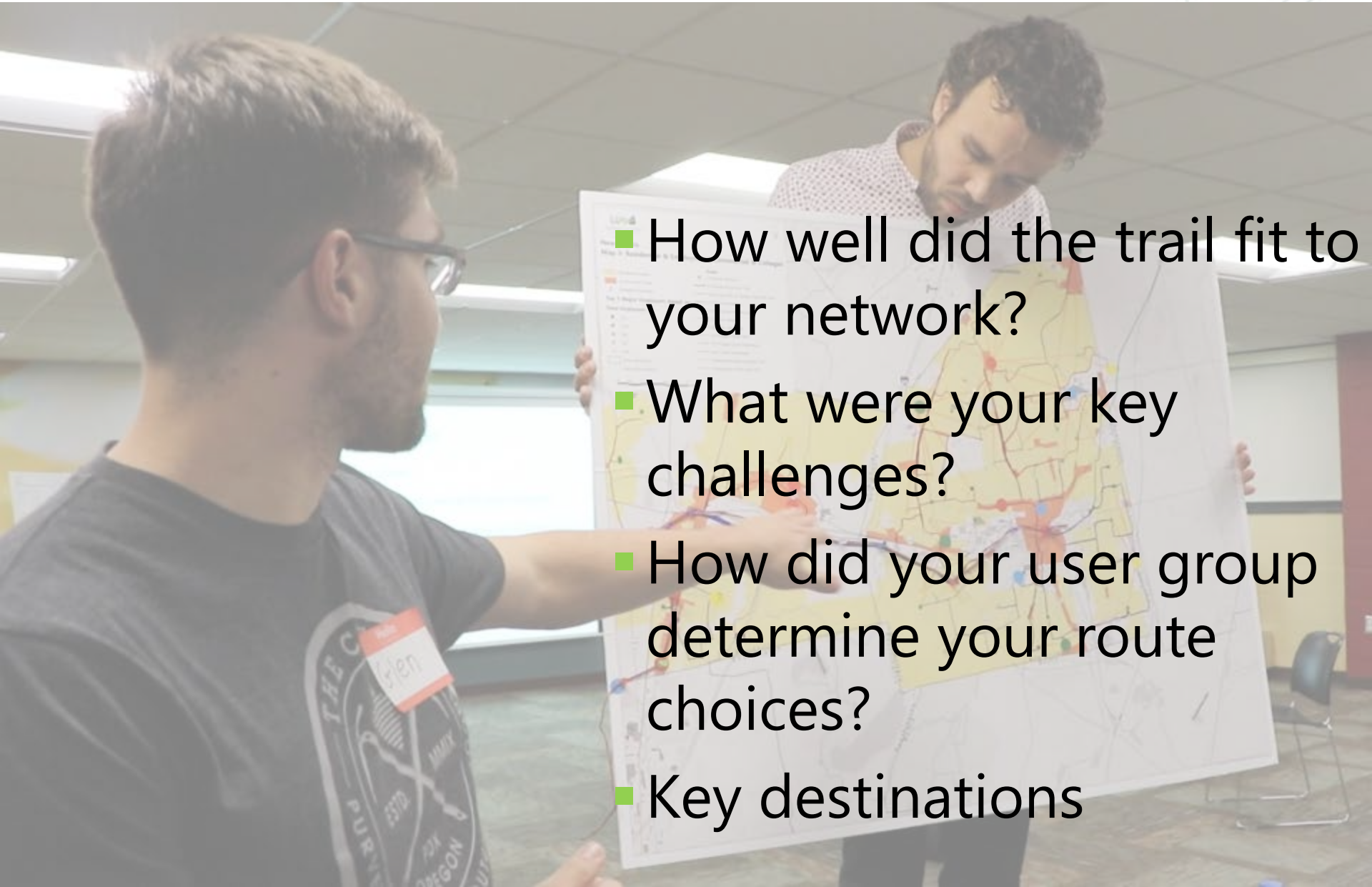
Parks and Recreation User Group



Commuter User Group



Report Back – New Britain



- How well did the trail fit to your network?
- What were your key challenges?
- How did your user group determine your route choices?
- Key destinations



NEW ZEALAND



Plainville

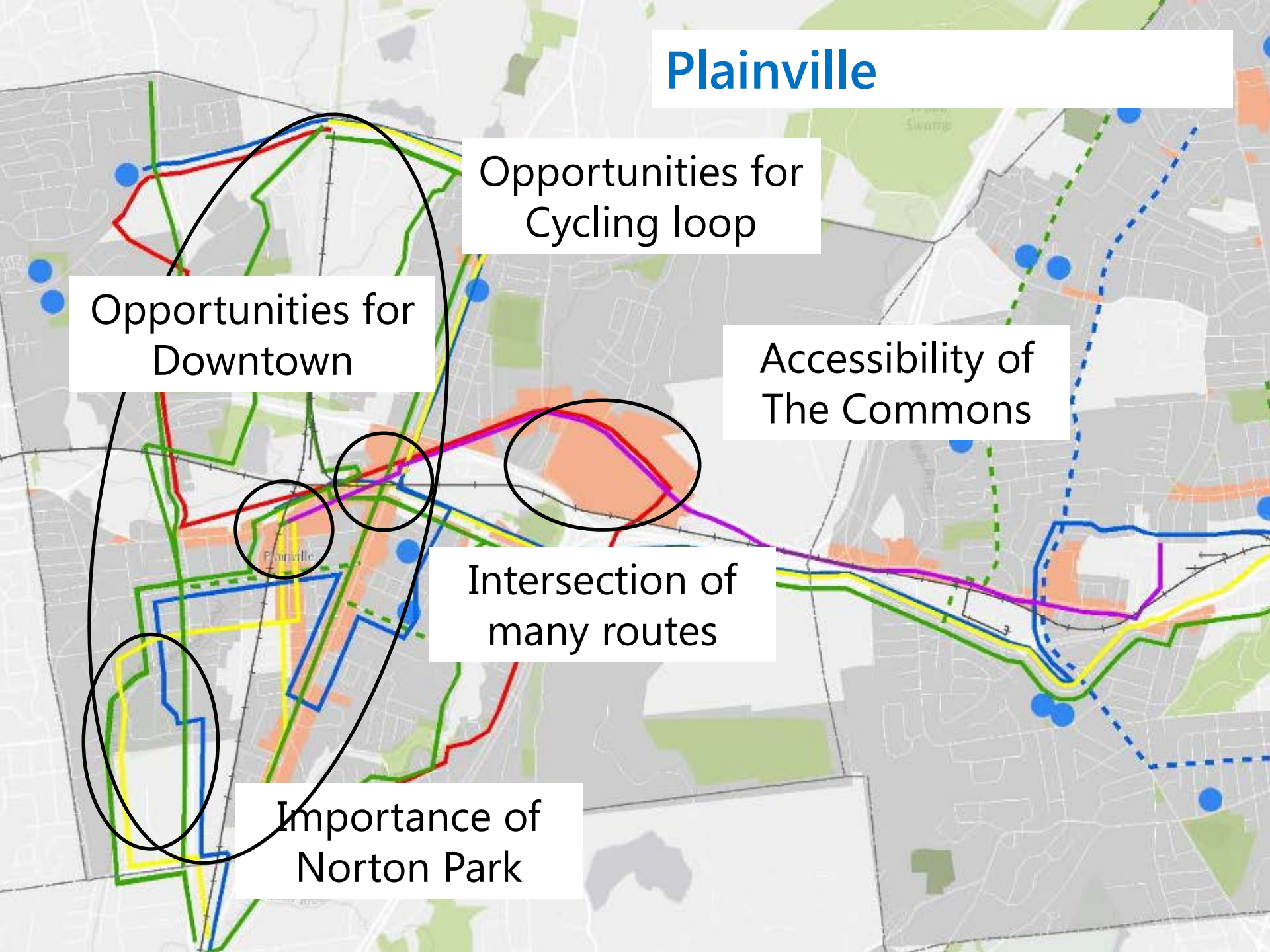
Opportunities for
Cycling loop

Opportunities for
Downtown

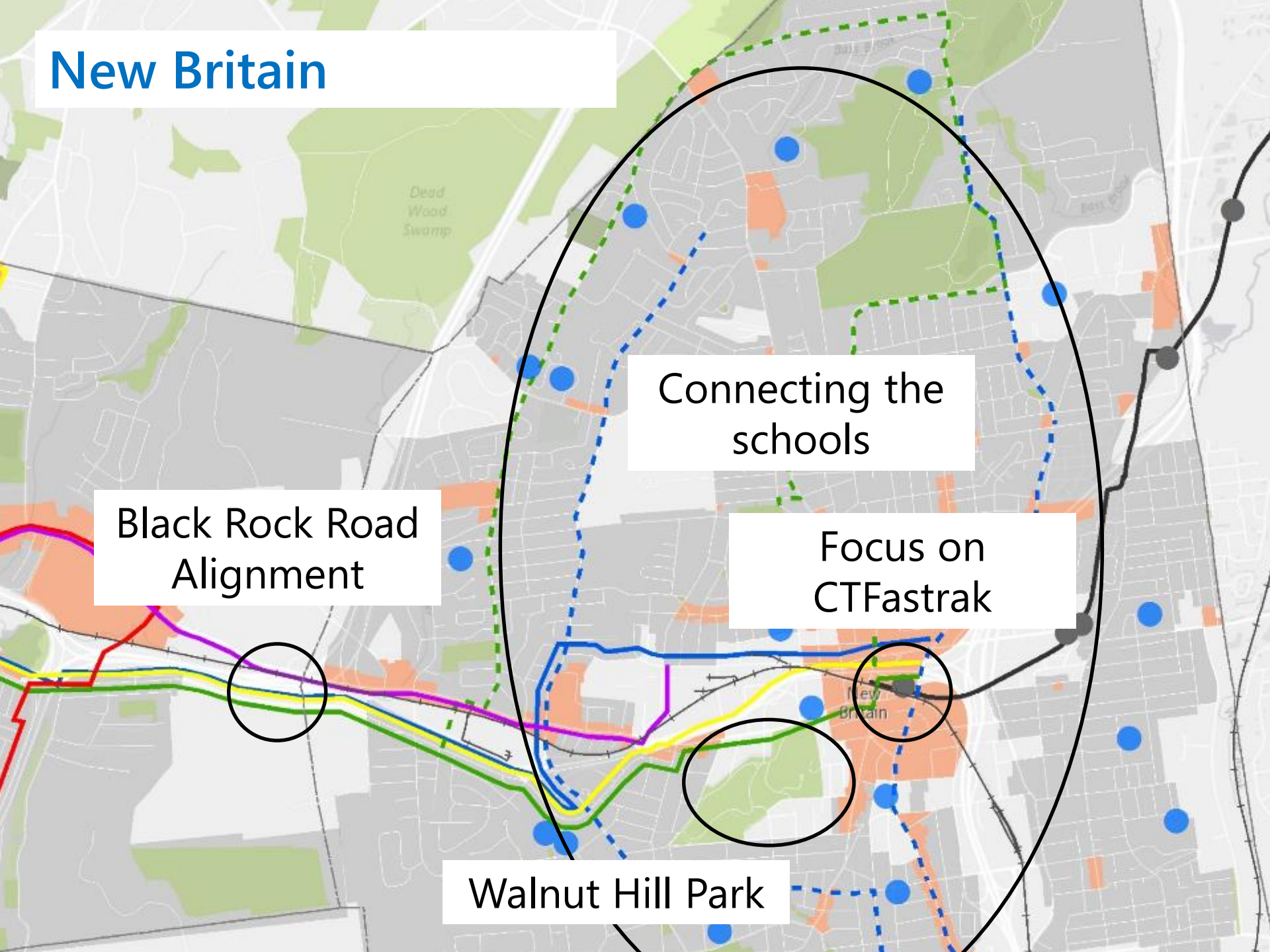
Accessibility of
The Commons

Intersection of
many routes

Importance of
Norton Park



New Britain



Connecting the
schools

Black Rock Road
Alignment

Focus on
CTfastrak

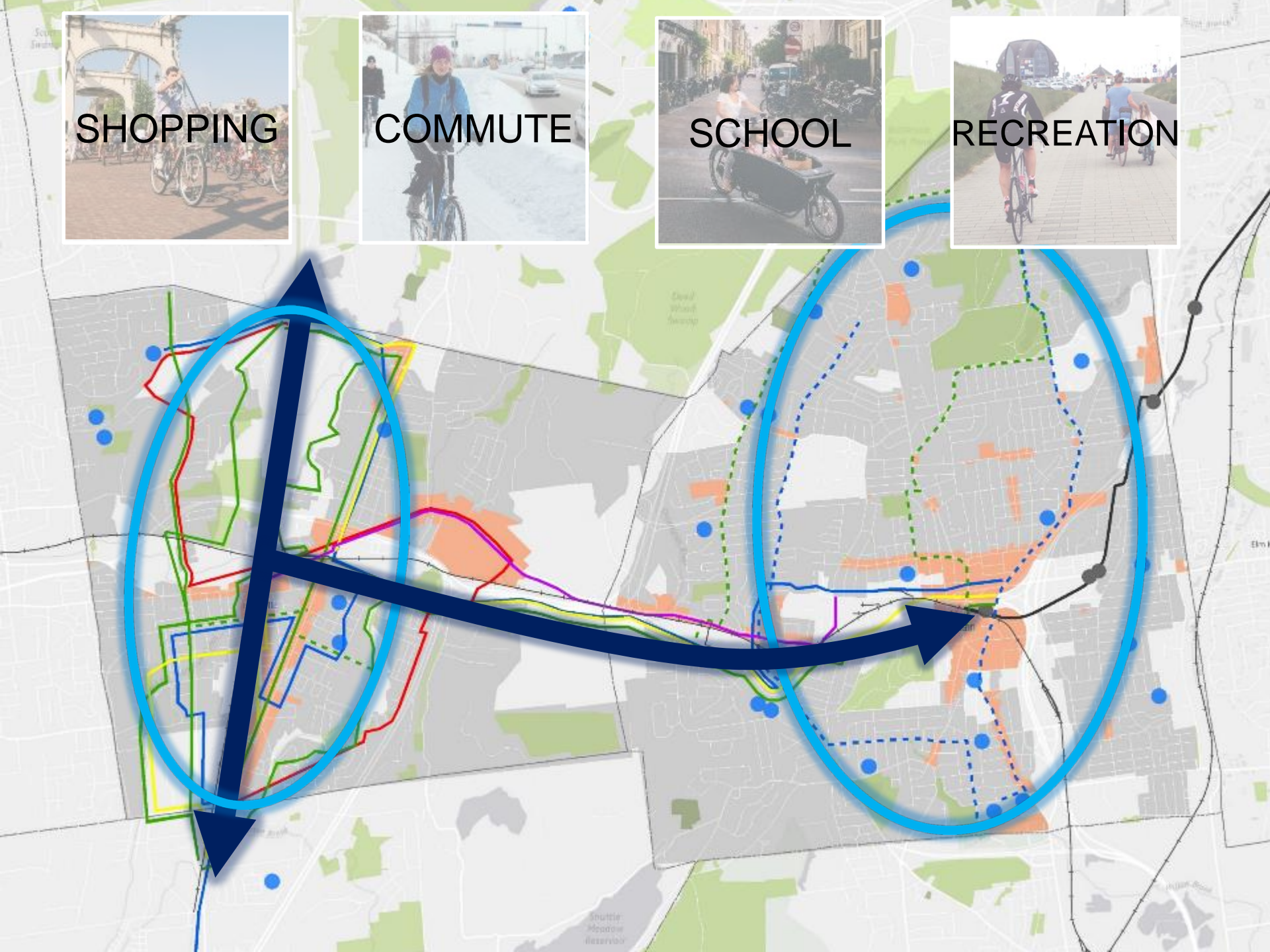
Walnut Hill Park

SHOPPING

COMMUTE

SCHOOL

RECREATION

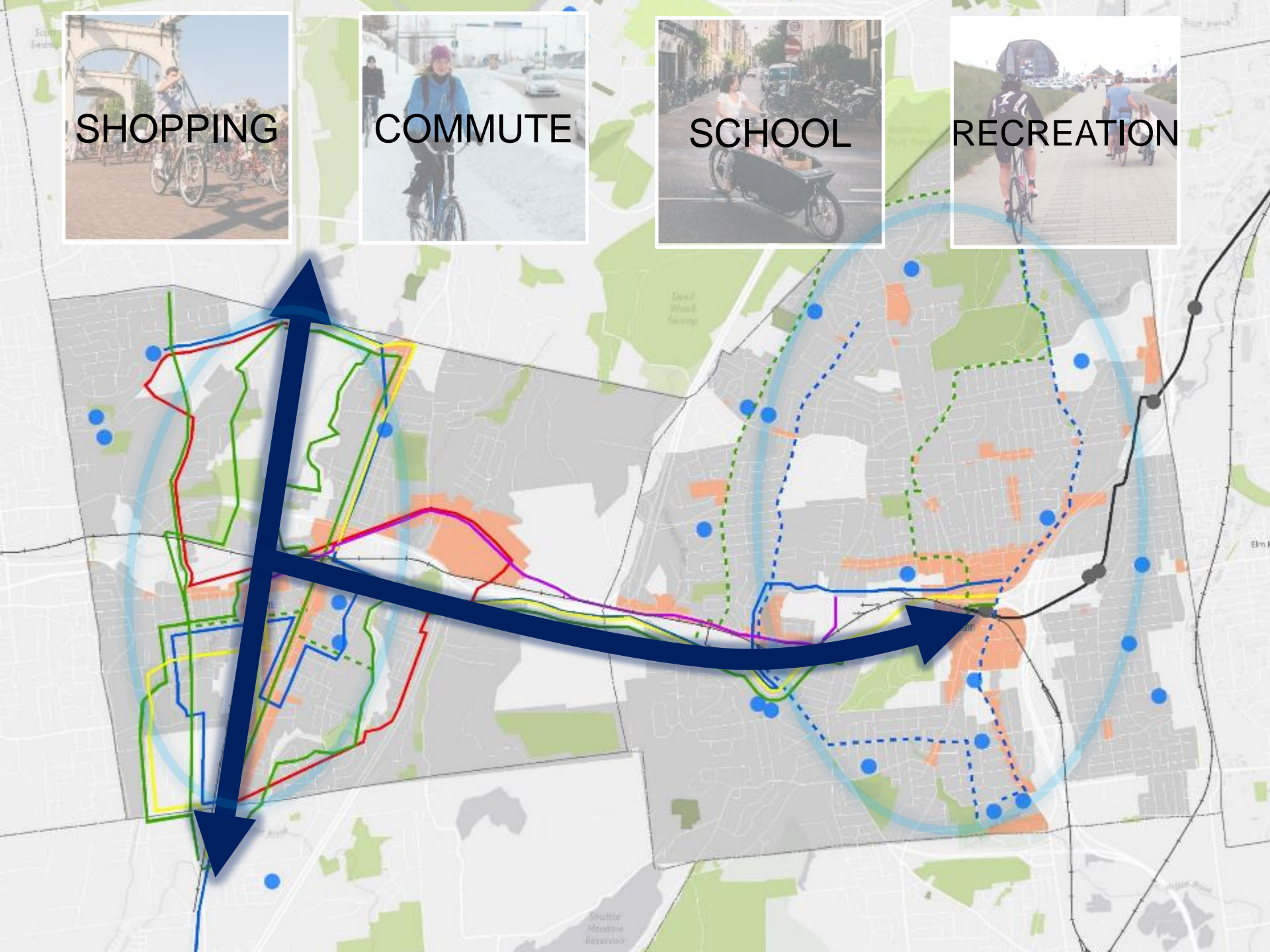


SHOPPING

COMMUTE

SCHOOL

RECREATION

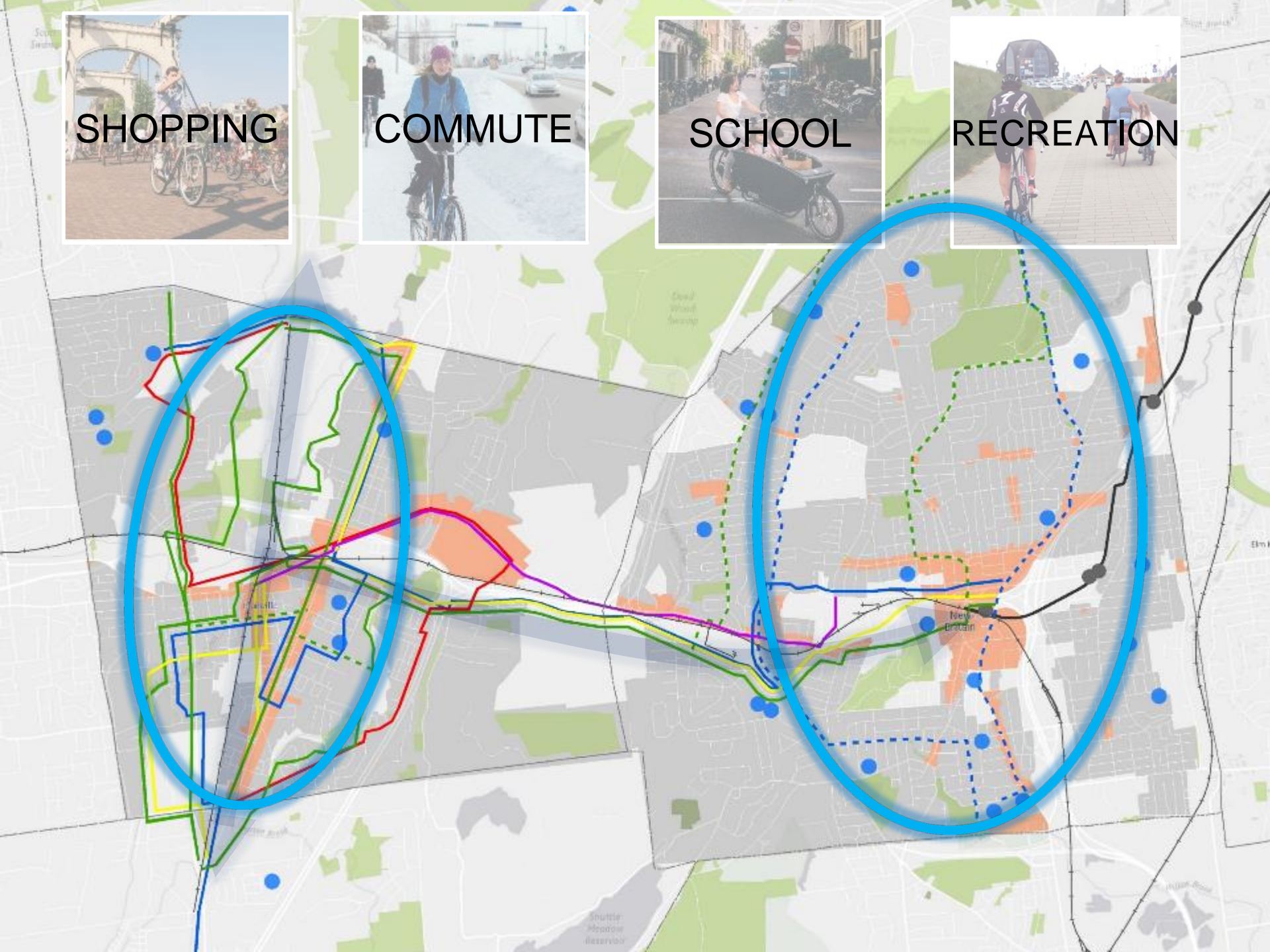


SHOPPING

COMMUTE

SCHOOL

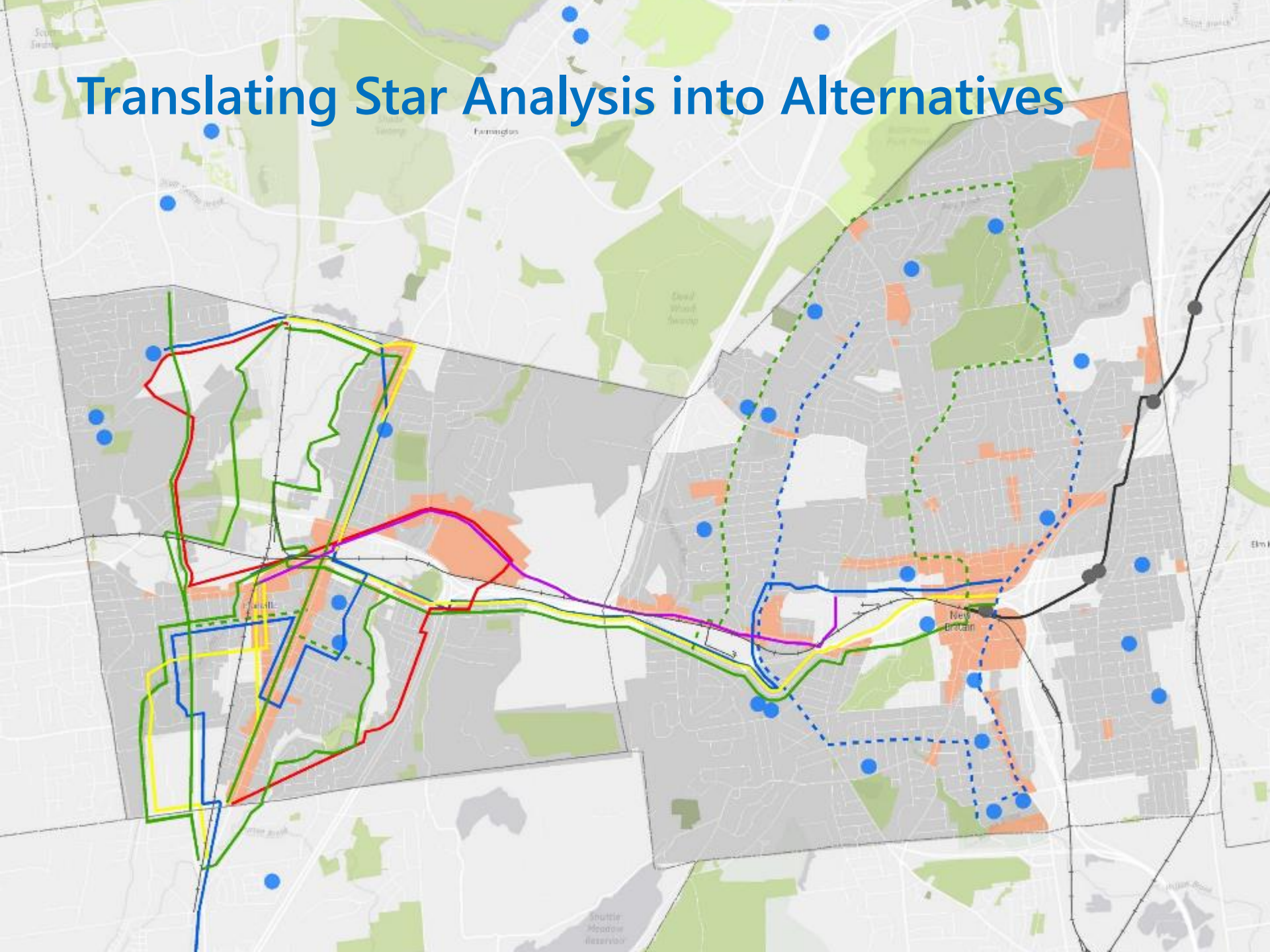
RECREATION



Next Steps

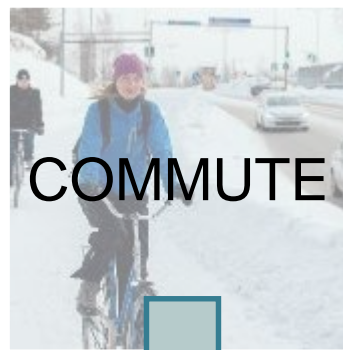


Translating Star Analysis into Alternatives

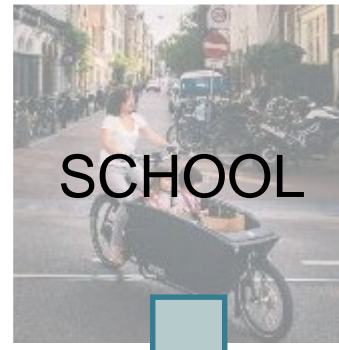




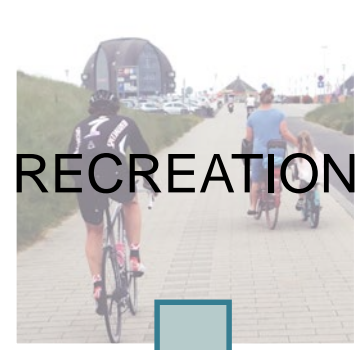
SHOPPING



COMMUTE



SCHOOL



RECREATION

TECHNICAL ANALYSIS

DECISION MATRIX

ALTERNATIVES

Technical Evaluation Process

- Alignments will be evaluated to determine which facility type is appropriate for each part of the alignment.
- Once the facility type is determined, alignments will be evaluated using the decision matrix.
- Evaluation will include:
 - Connectivity
 - Traffic Safety
 - On vs. Off Road
 - Personal Security
 - Environmental Impacts
 - Right-of-way impacts
 - Cost

Decision Matrix by Engineers



Evaluation Process

Inputs: Alignments



Outputs: Top Four Preferred Alignments

Decision Matrix Criteria

- Connectivity – To trails, destinations, schools, etc.
- Safety of Trail – From Traffic and Personal Safety
- Environmental Impacts
- Cost
- On Road / Off Road
- Right-of-way/Property Impacts

Variable	Connectivity
Schools	0
Recreation Facilities	9
Commercial Locations	396
Cultural Resources	32
Population	<ul style="list-style-type: none"> • Plainville: 4,087 • Southington: 320 • Farmington: 55
	Environmental
Wetland Impact	4.51
Floodplain Impact	25.6%
Natural Diversity Database	No
Historic Cultural Resources	3
Hazardous Materials	4
Impervious Surface	6.18
	Potential Property Impacts
Private Property	72
Town-Owned Property	6

Facility Types



Separated Bike Lane



Buffered Bike Lane



Active Rail with Trail



Bike Lane

Facility Types



Multi-use Trail



Bike Shoulder



Marked Shared Lane (Sharrow)



Sidepath

We Want to Hear From You!

Public Information Meeting Early Winter



Website - Best way to get Information



Select Language ▼

Home About Participate Study Team Resources FAQ



The Capitol Region Council of Governments (CROC), the Connecticut Department of Transportation (Department), the Town of Plainville (Plainville), the Town of Southington (Southington), the City of New Britain (City) and the Plainville Greenway Alliance (PGA) have initiated this study to evaluate the feasibility of potential alignments and infrastructure needs for the Farmington Canal Heritage Trail (FCHT) through Plainville and into Southington and a connection to New Britain's bicycle network and CTfastrak station.

This study will have two distinct objectives:

1. Close the Gap in the FCHT through Southington and Plainville and
2. Identify a connection to the CTfastrak station in New Britain.

The FCHT runs from New Haven, CT to Northampton, MA, covering approximately 84 miles. Of these 84 miles, the only Gap in the trail is through the Town of Plainville and into Southington, all other sections are either completed, or in design or construction. The Plainville section has not been completed due largely to an active rail line being present within the FCHT corridor.

The recent opening of CTfastrak in Connecticut includes a new multi-use trail for central Connecticut. The next logical step is to connect the FCHT to the CTfastrak station in New Britain and its adjacent multi-use trail to further enhance the bicycle and pedestrian amenities in the region. Since all CTfastrak buses are equipped with bicycle racks, this connection can greatly extend the distance a cyclist can travel to get to

UPCOMING EVENTS

October 3, 2016

Plainville Planning Workshop

5:00 - 8:00 PM

Plainville Public Library

October 4, 2016

New Britain Planning Workshop

5:30 - 8:00 PM

New Britain Public Library



Tim Malone | tmalone@crcog.org | 860.522.2217 Ext. 224

Dave Head | dhead@vhb.com

Andrea Drabicki | adrabicki@vhb.com

Dan Burden | dan.burden@bluezones.com

Samantha Thomas | samantha@bluezones.com

Mary Elbech | m.embry@mobycon.com

Lennart Nout | l.nout@mobycon.com



www.gapclosurestudy.com